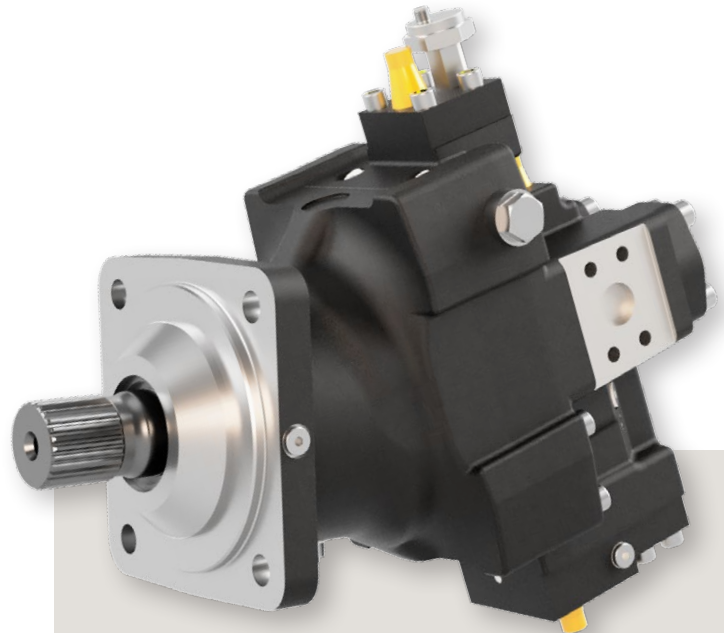


# Hydraulic Motor with Variable Displacement

# V16

Series V16 is a new generation of variable displacement, bent-axis motors. A further development of our well known V12 and V14 motor series.

It is designed for both open and closed circuit transmissions with focus on high performance machines. Sizes from 220 – 270cc.



## Fuel savings and less CO2 emissions

V16 is probably the most efficient variable bent-axis motors on the market. Now with the ability of stroking to zero displacement. This will give superior fuel savings and reduced environmental footprint.

## Performance & productivity

V16 high speed motors offer superior performance, outstanding efficiency and speed capability throughout the entire displacement range.

## Optimal control under extreme conditions

The V16 variable motor offers world class displacement ratio (5,5:1). This increased working range of displacement gives very high resolution which means accuracy and controllability.

- 1 Unbeatable efficiency
- 2 World class speed capability
- 3 Pressures up to 550 bar

## Click for more information

- » [Parker.com](#)
- » [Landing page](#)
- » [Catalogue](#)
- » [Video](#)
- » [Infographic](#)



ENGINEERING YOUR SUCCESS.